

**MODENA CENTRO PROVE s.r.l.**

Sede legale e Laboratori: 41123 Modena (Italy) - Via Sallustio, 78
 Tel. 059 822417 r.a. - Fax 059380281 - e-mail : info@modenacentroprove.it - www.modenacentroprove.com
 C.C.I.A.A. Modena n. 228587 - Tribunale di Modena n° 2231 - C.F. e P. IVA n. 01592020364

MECCANICA

ECOLOGIA

CERAMICA

ALIMENTARE



Certificato n°
50 100 4582



Diploma
IWR/IT n°
30438



Socio



Membro



Socio

Unione Industriali
Modena

Modena, 26/09/17

To **FLORIM CERAMICHE SPA**
 VIA CANALETTO 24
 41042 FIORANO MODENESE MO

Attn. **Turrini**

MATERIAL and/or SAMPLE to be tested	Denomination of the Sample	Client Reference – Your delivery	date
porcelain tiles	serie PREXIOUS DI REX marchio REX articolo PREXIOUS REX MOUNTAIN TREASURE GLO 80X180	Ns. ritiro	15/09/2017

Here attached, you will receive the Test Report of Serial No. **20176259/n**, which shows the results of tests required.

MODENA CENTRO PROVE

MODENA CENTRO PROVE

 Director
 Sant'Unione dr. Giuseppe



TEST REPORT: 20176259/1

Modena, 26/09/17

CUSTOMER

**FLORIM CERAMICHE SPA - - VIA CANALETTO 24 - 41042 - FIORANO
MODENESE - MO**

**MATERIAL and/o SAMPLE to be
tested**

porcelain tiles;

Denomination

serie PREXIOUS DI REX marchio REX articolo PREXIOUS REX MOUNTAIN
TREASURE GLO 80X180;

Date of sample reception

15/09/2017;

Date of sample acceptance

15/09/2017;

Kind of test executed

Determination of the Resistance to Stains

Referring standards

UNI EN ISO 10545-14:2015

Shifting from standards

No one

Equipment

Luxmeter cod. MCP C69 - Forced ventilation stove cod. MCP C43

Calibration

C69: LAT 15003632 of 06/10/2015 - C43: LAT 011 272-SE-17 of 23/05/2017

Subcontracted phases

No one

Sampling made by

Customer

*The test results showing in this Report are only referred to the sample taken by our staff or supplied by the Customer. He commits himself to reproduce integrally this document. Partial reproduction is forbidden.
The times of retain of the samples was indicated in the offer related to the test report.*

Examiner

p.i. Bortolai Alberto

MODENA CENTRO PROVE

P.I. De Pasquale Roberto
Ceramic Dept. Responsible

MODENA CENTRO PROVE

Sant'Unione dr. Giuseppe
Director



DETERMINATION OF THE RESISTANCE TO STAINS

Beginning date : 19/09/17

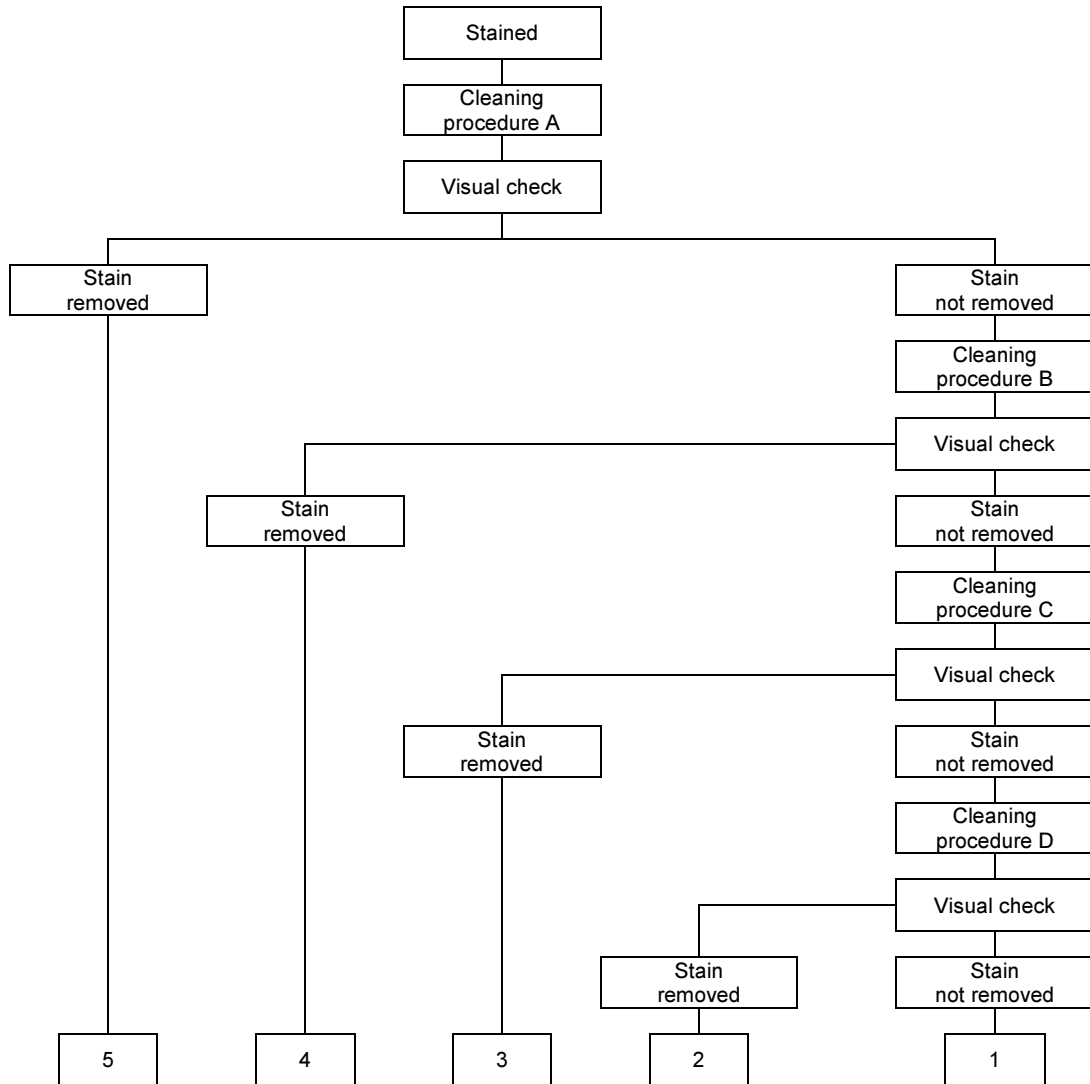
Analysis ending date : 20/09/17

SAMPLE : Ceramic tiles, marked « serie PREXIOUS DI REX marchio REX articolo PREXIOUS REX MOUNTAIN TREASURE GLO 80X180 »

The test was performed by subjecting the surface of the tiles to the action of test solutions and then inspecting for visual changes.

CLASSIFICATION

Classification of the Stains by Cleaning Test



Examiner

 p.i. Bortolai Alberto

MODENA CENTRO PROVE

 Ceramic Dept. Responsible
 P.I. De Pasquale Roberto

MODENA CENTRO PROVE

 Director
 Sant'Unione dr. Giuseppe



RESULTS

Classification:

Sample n°	Standing time	Staining agents	Cleaning agents						Class
			Procedure A	Procedure B	Procedure C	Procedure D			
			Hot water	Weak cleaning agent	Strong cleaning agent	Solvents			
						HCl 3%	KOH 200 g/l	ACETONE	
1	24 hours	Green staining agent in light oil	Removed						5
	24 hours	Iodine 13 g/l solution in alcohol	Not removed	Not removed	Removed				3
	24 hours	Olive oil	Removed						5
2	24 hours	Green staining agent in light oil	Removed						5
	24 hours	Iodine 13 g/l solution in alcohol	Not removed	Not removed	Removed				3
	24 hours	Olive oil	Removed						5
3	24 hours	Green staining agent in light oil	Removed						5
	24 hours	Iodine 13 g/l solution in alcohol	Not removed	Not removed	Removed				3
	24 hours	Olive oil	Removed						5
4	24 hours	Green staining agent in light oil	Removed						5
	24 hours	Iodine 13 g/l solution in alcohol	Not removed	Not removed	Removed				3
	24 hours	Olive oil	Removed						5
5	24 hours	Green staining agent in light oil	Removed						5
	24 hours	Iodine 13 g/l solution in alcohol	Not removed	Not removed	Removed				3
	24 hours	Olive oil	Removed						5

REQUIREMENTS UNI EN 14411:2016

GROUP:

Bla

UNI EN 14411:2012 Annex:

G

RESISTANCE TO STAINING	REQUIREMENT	
	Glazed tiles	Minimum Class 3
Unglazed tiles	Declared value	

Examiner

 p.i. Bortolai Alberto

MODENA CENTRO PROVE

 Ceramic Dept. Responsible
 P.I. De Pasquale Roberto

MODENA CENTRO PROVE

 Director
 Sant'Unione dr. Giuseppe