

**MODENA CENTRO PROVE s.r.l.**

Sede legale e Laboratori: 41123 Modena (Italy) - Via Sallustio, 78  
 Tel. 059 822417 r.a. - Fax 059380281 - e-mail : [info@modenacentroprove.it](mailto:info@modenacentroprove.it) - [www.modenacentroprove.com](http://www.modenacentroprove.com)  
 C.C.I.A.A. Modena n. 228587 - Tribunale di Modena n° 2231 - C.F. e P. IVA n. 01592020364

MECCANICA

ECOLOGIA

CERAMICA

ALIMENTARE



Certificato n°  
50 100 4582



Diploma  
IWR/IT n°  
30438



Socio



Membro



Socio

Unione Industriali  
Modena

Iscritto

Modena, 28/09/17

To **FLORIM CERAMICHE SPA**  
 VIA CANALETTO 24  
 41042 FIORANO MODENESE MO

Attn. **Turrini**

MATERIAL and/or SAMPLE to be tested	Denomination of the Sample	Client Reference – Your delivery	date
porcelain tiles	serie PREXIOUS DI REX marchio REX articolo PREXIOUS REX MOUNTAIN TREASURE GLO 80X180	Ns. ritiro	15/09/2017

Here attached, you will receive the Test Report of Serial No. **20176461/n**, which shows the results of tests required.

**MODENA CENTRO PROVE**

MODENA CENTRO PROVE  
  
 Director  
 Sant'Unione dr. Giuseppe



**MODENA CENTRO PROVE s.r.l.**  
Sede legale e Laboratori: 41123 Modena (Italy) - Via Sallustio, 78  
Tel. 059 822417 r.a. - Fax 059380281 - e-mail : [info@modenacentroprove.it](mailto:info@modenacentroprove.it) -  
[www.modenacentroprove.com](http://www.modenacentroprove.com)  
C.C.I.A.A. Modena n. 228587 - Tribunale di Modena n° 2231 C.F. e P. IVA n. 01592020364



LAB N°1018  
Membro degli Accordi di Mutuo  
Riconoscimento EA, IAF e ILAC  
Signatory of EA, IAF and ILAC Mutual  
Recognition Agreements

## TEST REPORT: 20176461/1

Modena, 28/09/17

### CUSTOMER

**FLORIM CERAMICHE SPA - - VIA CANALETTO 24 - 41042 - FIORANO  
MODENESE - MO**

### MATERIAL and/o SAMPLE to be tested

porcelain tiles;

### Denomination

serie PREXIOUS DI REX marchio REX articolo PREXIOUS REX MOUNTAIN  
TREASURE GLO 80X180;

### Date of sample reception

15/09/2017;

### Kind of test executed

Determination of Chemical Resistance

### Referring standards

UNI EN ISO 10545-13:2017

### Shifting from standards

No one

### Equipment

Forced ventilation stove cod. MCP C43

### Calibration

C43: LAT 011 272-SE-17 of 23/05/2017

### Subcontracted phases

No one

### Sampling made by

Customer

*The test results showing in this Report are only referred to the sample taken by our staff or supplied by the Customer. He commits himself to reproduce integrally this document. Partial reproduction is forbidden.  
The times of retain of the samples was indicated in the offer related to the test report.*

Examiner

p.i. Bortolai Alberto

MODENA CENTRO PROVE

Ceramic Dept. Responsible  
P.I. De Pasquale Roberto

MODENA CENTRO PROVE

Director  
Sant'Unione dr. Giuseppe



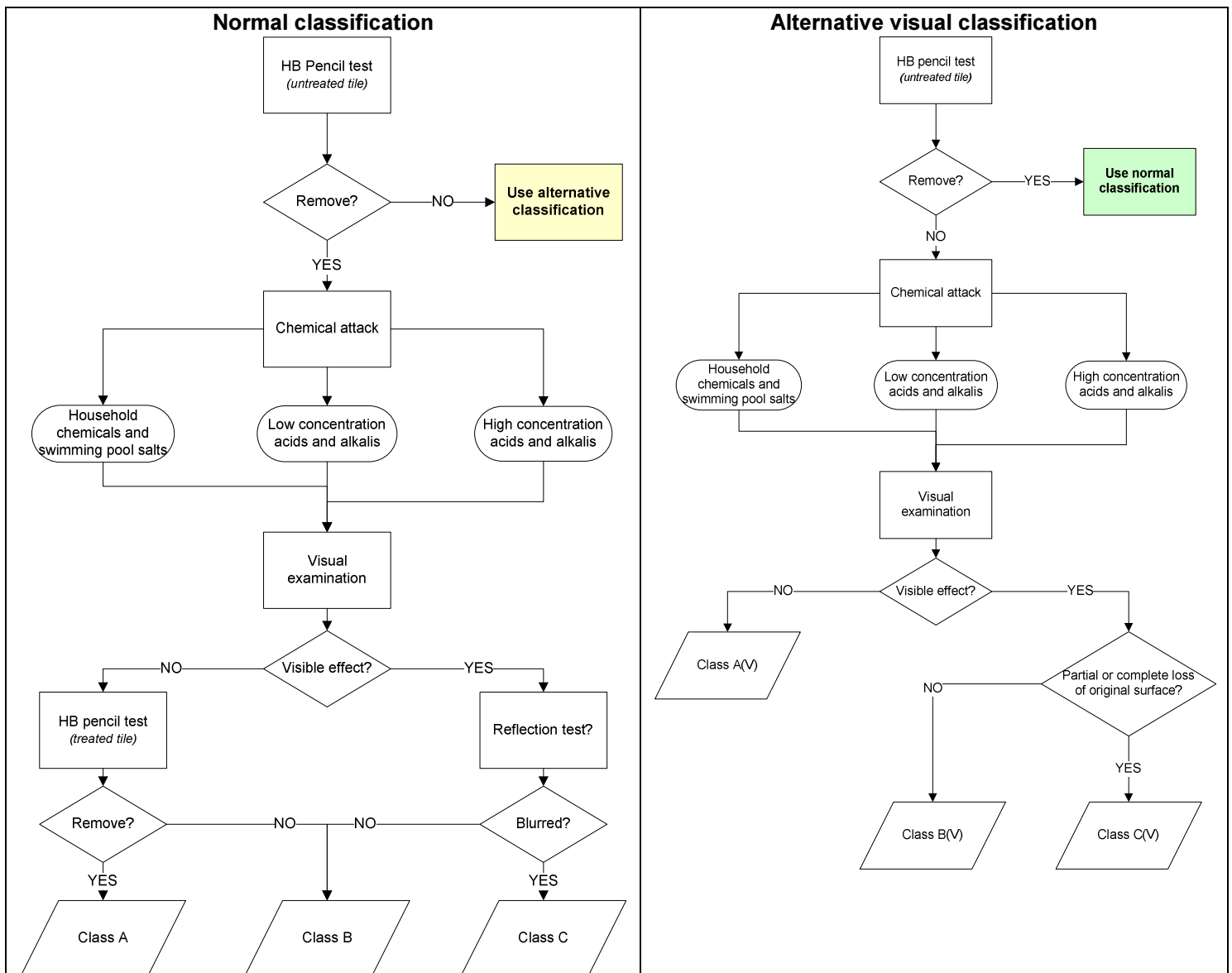
## DETERMINATION OF CHEMICAL RESISTANCE

Beginning date : 21/09/2017

Analysis ending date : 25/09/2017

**SAMPLE** : Ceramic tiles, marked « serie PREXIOUS DI REX marchio REX articolo PREXIOUS REX MOUNTAIN TREASURE GLO 80X180 »

### CLASSIFICATION



Examiner

p.i. Bortolai Alberto

MODENA CENTRO PROVE

Ceramic Dept. Responsible  
 P.I. De Pasquale Roberto

MODENA CENTRO PROVE

Director  
 Sant'Unione dr. Giuseppe



**MODENA CENTRO PROVE s.r.l.**  
 Sede legale e Laboratori: 41123 Modena (Italy) - Via Sallustio, 78  
 Tel. 059 822417 r.a. - Fax 059380281 - e-mail : [info@modenacentroprove.it](mailto:info@modenacentroprove.it) -  
[www.modenacentroprove.com](http://www.modenacentroprove.com)  
 C.C.I.A.A. Modena n. 228587 - Tribunale di Modena n° 2231 C.F. e P. IVA n. 01592020364



LAB N°1018  
 Membro degli Accordi di Mutuo Riconoscimento EA, IAF e ILAC  
 Signatory of EA, IAF and ILAC Mutual Recognition Agreements

**RESULTS**

TEST SOLUTIONS	Period of Test	CLASS OF RESISTANCE Sample 1	CLASS OF RESISTANCE Sample 2	CLASS OF RESISTANCE Sample 3
Ammonium chloride 100 g/l	24 hours	A	A	A
Sodium hypochlorite solution 20 mg/l	24 hours	A	A	A
Citric acid solution 100 g/l	24 hours	LA	LA	LA
Hydrochloric acid solution 3% (V/V)	(96±1) hours	LB	LB	LB
Potassium hydroxide 30 g/l	(96±1) hours	LB	LB	LB
Hydrochloric acid solution 18% (V/V)	(96±1) hours	HB	HB	HB
Lactic acid 5% (V/V)	(96±1) hours	HB	HB	HB
Potassium hydroxide 100 g/l	(96±1) hours	HB	HB	HB

**REQUIREMENTS UNI EN 14411:2016**

GROUP: Bla

UNI EN 14411:2016 Annex: G

		REQUIREMENT
<b>CHEMICAL RESISTANCE</b>	Testing with household chemicals, swimming pool salt	minimum classe B
	Testing with products at low acid and alkalis concentration	declared value
	Testing with products at high acid and alkalis concentration	declared value

Type of chemical attack: contact on proper surface

 Examiner p.i. Bortolai Alberto	 MODENA CENTRO PROVE Ceramic Dept. Responsible P.I. De Pasquale Roberto	 MODENA CENTRO PROVE Director Sant'Unione dr. Giuseppe
---------------------------------------	--	---