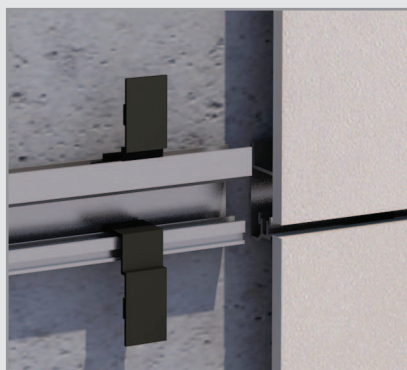


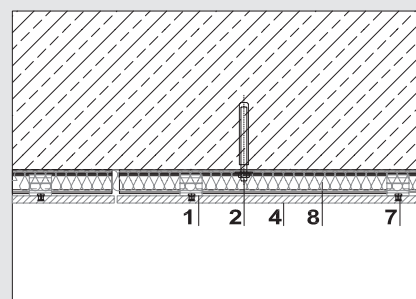
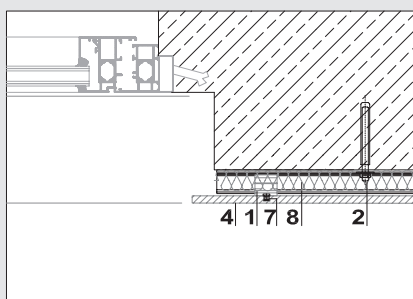
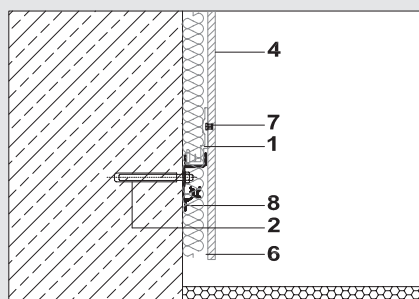
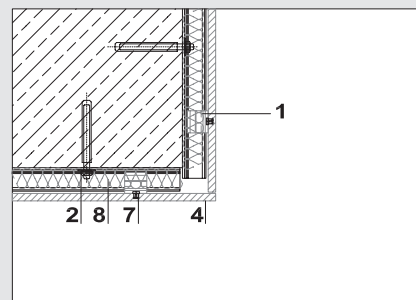
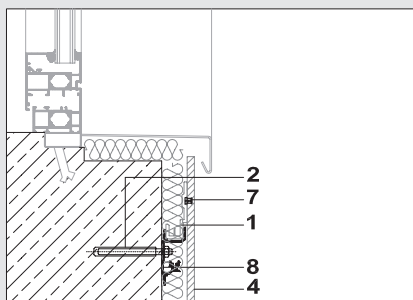
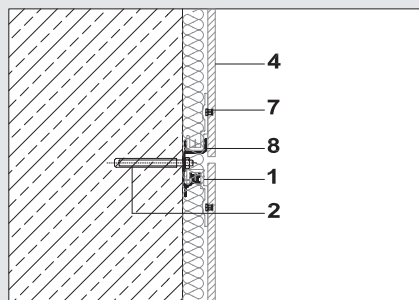
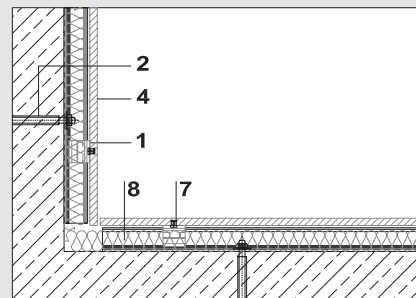
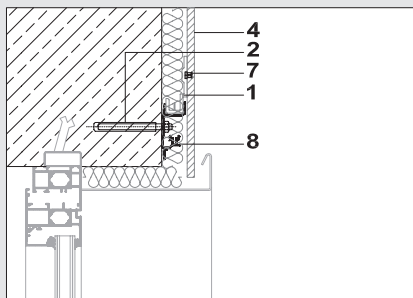
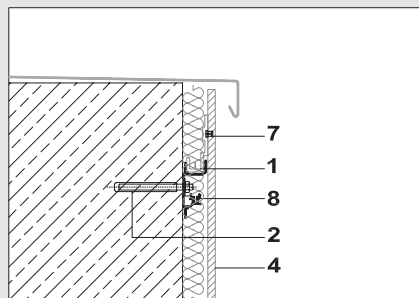
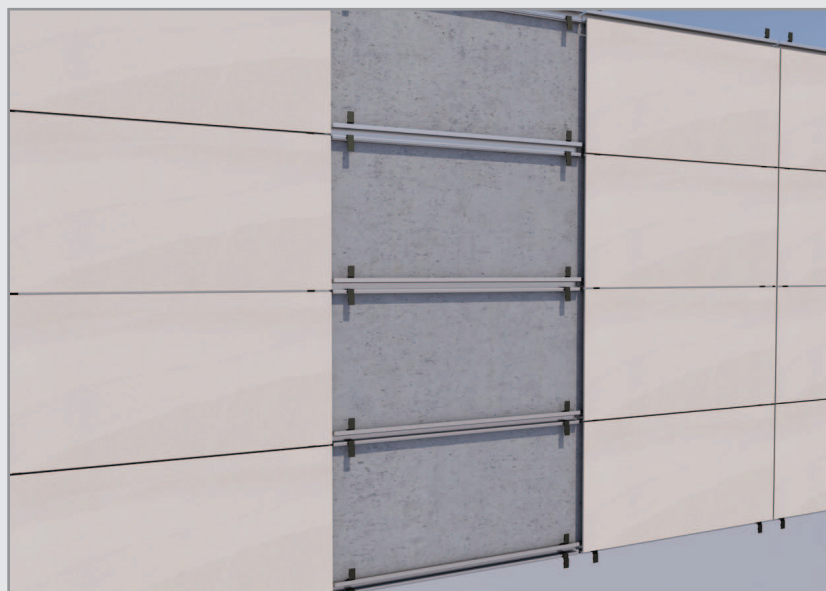


## Sistema di ancoraggio / anchorage system

### S4 light



- 1- GANCIO/HOOK
- 2- TASSELLO/PLUG
- 3- STAFFA/BRACKET
- 4- LASTRA/SLAB
- 5- PROFILO/PROFILE
- 6- GRIGLIA/GRID
- 7- ANCORAGGIO/ANCHORAGE
- 8- TRAVERSO/TRANSVERSE





### SISTEMA S4 light

Fornitura e posa in opera di rivestimento per facciata ventilata come da elaborati grafici da progetto esecutivo costituito da sistema integrato con lastre in gres fine porcellanato FLORIM dimensioni \_\_\_\_\_ cm, collezione \_\_\_\_\_. Il sistema di facciata ventilata S4 light è composto dai seguenti elementi:

- profili orizzontali estrusi in alluminio, lega EN 6060 T5 (o simili, secondo necessità);
- tassello tronco conico tipo KEIL in acciaio inossidabile EN 1.4310 (AISI 304 o simili, secondo necessità), il numero di KEIL dipende dalle azioni di carico;
- tasselli di ancoraggio del profilo al supporto murario, meccanici o chimici, secondo necessità;
- su richiesta, rete di sicurezza in fibra di vetro, maglia 5x5 mm, incollata sul retro della lastra.

Il sistema S4 light prevede il montaggio del profilo orizzontale di alluminio, posato a correre in corrispondenza delle fughe orizzontali tra le lastre, con passo pari all'altezza delle lastre più la fuga.

La struttura metallica della parete sarà dimensionata per resistere alle sollecitazioni di carico statico e dinamico secondo normativa e vincolata al supporto strutturale esistente tramite tassello meccanico o chimico. Il profilo orizzontale viene installato direttamente su muratura con regolazione della planarità direttamente sul fissaggio, oppure su telaio metallico a cura del Committente. Una volta posata, ogni lastra può essere montata e/o smontata autonomamente rispetto a tutte le altre. Dimensione nominale delle fughe orizzontali 8 mm.

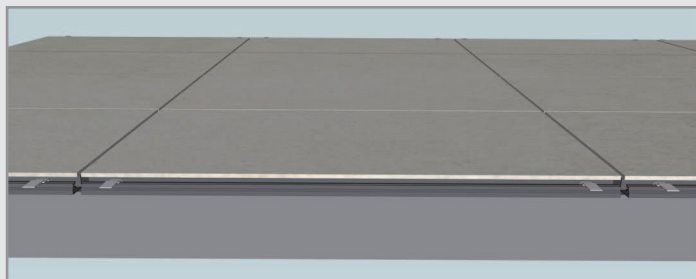
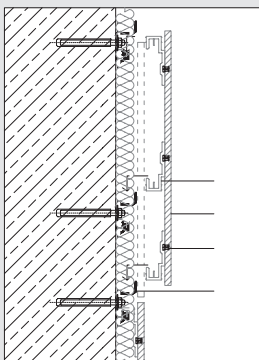
### S4 light SYSTEM

Supply and installation of cladding for ventilated façade according to the executive project drawings constituted by an integrated system with FLORIM fine porcelain stoneware slabs, size \_\_\_\_\_ cm, collection \_\_\_\_\_. The ventilated façade system S4 light consists of the following elements:

- extruded horizontal profiles made of aluminum alloy EN 6060 T5 (or similar, as needed);
- truncated cone wall plug KEIL type made of stainless steel EN 1.4310 (AISI 304 or similar, according to need), the number of KEIL depends on the action of the load;
- mechanical or chemical anchor to fix the brackets to the wall substrate, as needed;
- glass fiber safety net, mesh 5x5 mm, applied with glue on the back of the slabs, available on request.

The S4 light system provides the installation of the horizontal profiles laid over the horizontal joints between the slabs, spaced according to the width of the slab plus the joint.

The metallic structure of the wall is dimensioned to withstand the stresses of static and dynamic loads according to the codes and bound to the existing structural support by the mechanical or chemical wall plug. The horizontal profile is installed directly on the wall with adjustable flatness directly on the fixing, or on the metal frame by the Customer. Once laid, each slab can be installed and/or removed independently of all others. The nominal size of the horizontal joints is 8 mm.



- 1- GANCIO/HOOK
- 2- TASSELLO/PLUG
- 3- STAFFA/BRACKET
- 4- LASTRA/SLAB
- 5- PROFILO/PROFILE
- 6- GRIGLIA/GRID
- 7- ANCORAGGIO/ANCHORAGE
- 8- TRAVERSO/TRANSVERSE