



MODENA CENTRO PROVE s.r.l.

Sede legale e Laboratori: 41123 Modena (Italy) - Via Sallustio, 78
Tel. 059 822417 r.a. - Fax 059380281 - e-mail : info@modenacentroprove.it -
www.modenacentroprove.com
C.C.I.A.A. Modena n. 228587 - Tribunale di Modena n° 2231 C.F. e P. IVA n. 01592020364



LAB N°1018L

Membro degli Accordi di Mutuo Riconoscimento EA, IAF e ILAC

Signatory of EA, IAF and ILAC Mutual Recognition Agreements

TEST REPORT: 20198604/5

Modena, 11/12/19

CUSTOMER

**FLORIM CERAMICHE SPA - - VIA CANALETTO 24 - 41042 - FIORANO
MODENESE - MO**

MATERIAL and/o SAMPLE to be tested

porcelain tiles;

Denomination

serie Onyx & More articolo White porphyry superficie strutturato spessore 6 mm marchio casa Dolce casa;

Date of sample reception

18/11/2019;

Date of sample acceptance

18/11/2019;

Kind of test executed

Determination of the Resistance to Stains

Referring standards

UNI EN ISO 10545-14:2015

Shifting from standards

No one

Equipment

Luxmeter cod. MCP C69 - Forced ventilation stove cod. MCP C43

Subcontracted phases

No one

Sampling made by

Customer

*The test results showing in this Report are only referred to the sample taken by our staff or supplied by the Customer. He commits himself to reproduce integrally this document. Partial reproduction is forbidden.
The times of retain of the samples was indicated in the offer related to the test report.*

Examiner

p.i. Bortolai Alberto

MODENA CENTRO PROVE

Ceramic Dept. Responsible
P.I. De Pasquale Roberto

MODENA CENTRO PROVE

Director
Sant'Unione dr. Giuseppe



DETERMINATION OF THE RESISTANCE TO STAINS

Beginning date : 25/11/19

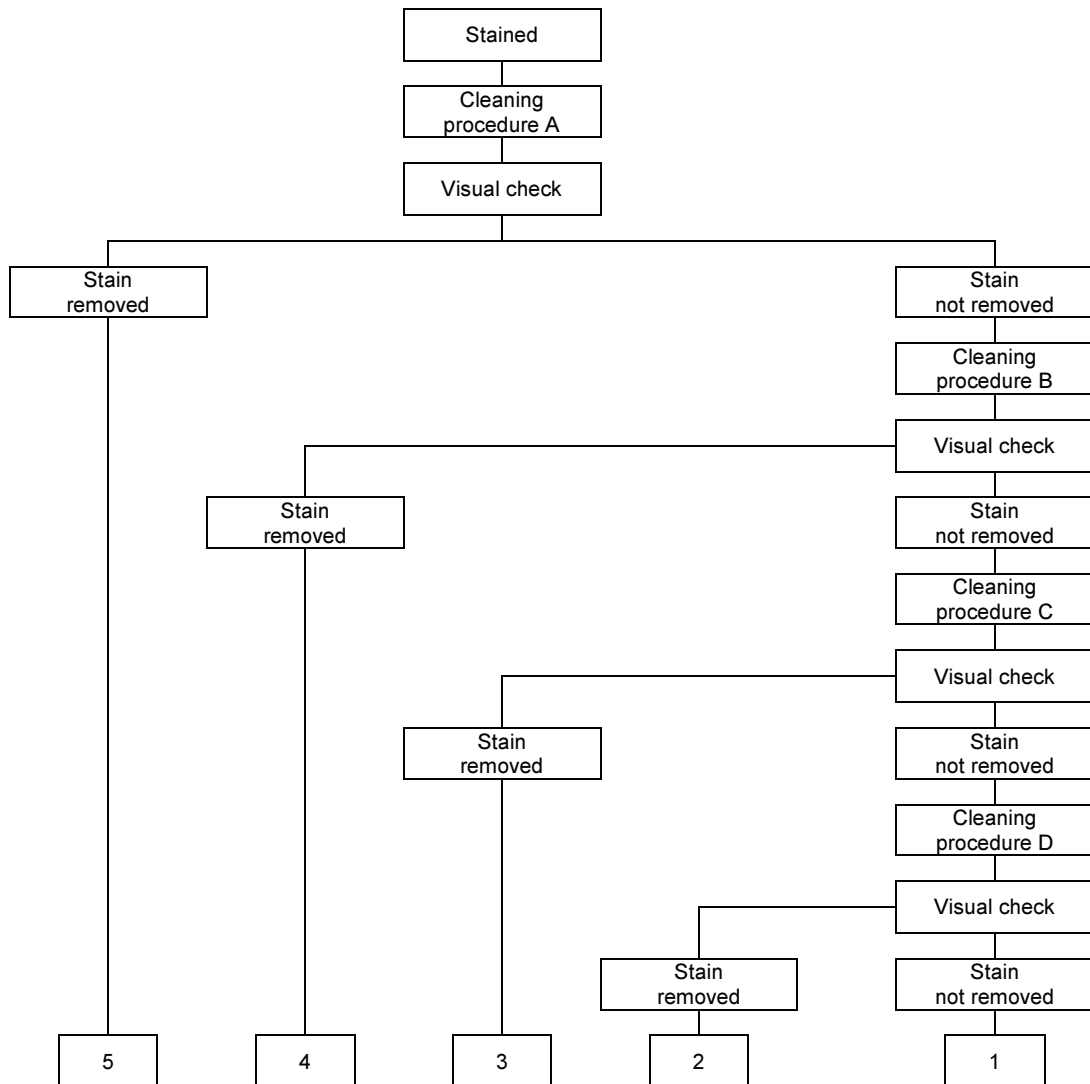
Analysis ending date : 26/11/19

SAMPLE : Ceramic tiles, marked « serie Onyx & More articolo White porphyry superficie strutturato spessore 6 mm marchio casa Dolce casa »

The test was performed by subjecting the surface of the tiles to the action of test solutions and then inspecting for visual changes.

CLASSIFICATION

Classification of the Stains by Cleaning Test



<p>Examiner p.i. Bortolai Alberto</p>	<p>MODENA CENTRO PROVE Ceramic Dept. Responsible P.I. De Pasquale Roberto</p>	<p>MODENA CENTRO PROVE Director Sant'Unione dr. Giuseppe</p>
---	--	---

**MODENA CENTRO PROVE s.r.l.**

Sede legale e Laboratori: 41123 Modena (Italy) - Via Sallustio, 78
 Tel. 059 822417 r.a. - Fax 059380281 - e-mail : info@modenacentroprove.it -
www.modenacentroprove.com
 C.C.I.A.A. Modena n. 228587 - Tribunale di Modena n° 2231 C.F. e P. IVA n. 01592020364



LAB N°1018L

Membro degli Accordi di Mutuo Riconoscimento EA, IAF e ILAC

Signatory of EA, IAF and ILAC Mutual Recognition Agreements

RESULTS**Classification:**

Sample n°	Standing time	Staining agents	Cleaning agents						Class
			Procedure A	Procedure B	Procedure C	Procedure D			
			Hot water	Weak cleaning agent	Strong cleaning agent	Solvents			
						HCl 3%	KOH 200 g/l	ACETONE	
1	24 hours	Green staining agent in light oil	Removed						5
	24 hours	Iodine 13 g/l solution in alcohol	Removed						5
	24 hours	Olive oil	Removed						5
2	24 hours	Green staining agent in light oil	Removed						5
	24 hours	Iodine 13 g/l solution in alcohol	Removed						5
	24 hours	Olive oil	Removed						5
3	24 hours	Green staining agent in light oil	Removed						5
	24 hours	Iodine 13 g/l solution in alcohol	Removed						5
	24 hours	Olive oil	Removed						5
4	24 hours	Green staining agent in light oil	Removed						5
	24 hours	Iodine 13 g/l solution in alcohol	Removed						5
	24 hours	Olive oil	Removed						5
5	24 hours	Green staining agent in light oil	Removed						5
	24 hours	Iodine 13 g/l solution in alcohol	Removed						5
	24 hours	Olive oil	Removed						5

REQUIREMENTS UNI EN 14411:2016

GROUP:

Bla

UNI EN 14411:2016 Annex:

G

RESISTANCE TO STAINING	REQUIREMENT	
	Glazed tiles	Minimum Class 3
Unglazed tiles	Declared value	

Examiner

 p.i. Bortolai Alberto

MODENA CENTRO PROVE

 Ceramic Dept. Responsible
 P.I. De Pasquale Roberto

MODENA CENTRO PROVE

 Director
 Sant'Unione dr. Giuseppe